

**CAUTION: BEFORE MOUNTING PLOW, PERFORM THE ELECTRICAL TEST ON SHEET 2. A FAULTY SOLENOID MAY CAUSE WIRES TO OVERHEAT AND DAMAGE ELECTRICAL CONNECTIONS. IF YOU ARE UNSURE PLEASE CONTACT A LICENSED PROFESSIONAL FOR INSTILATION.**

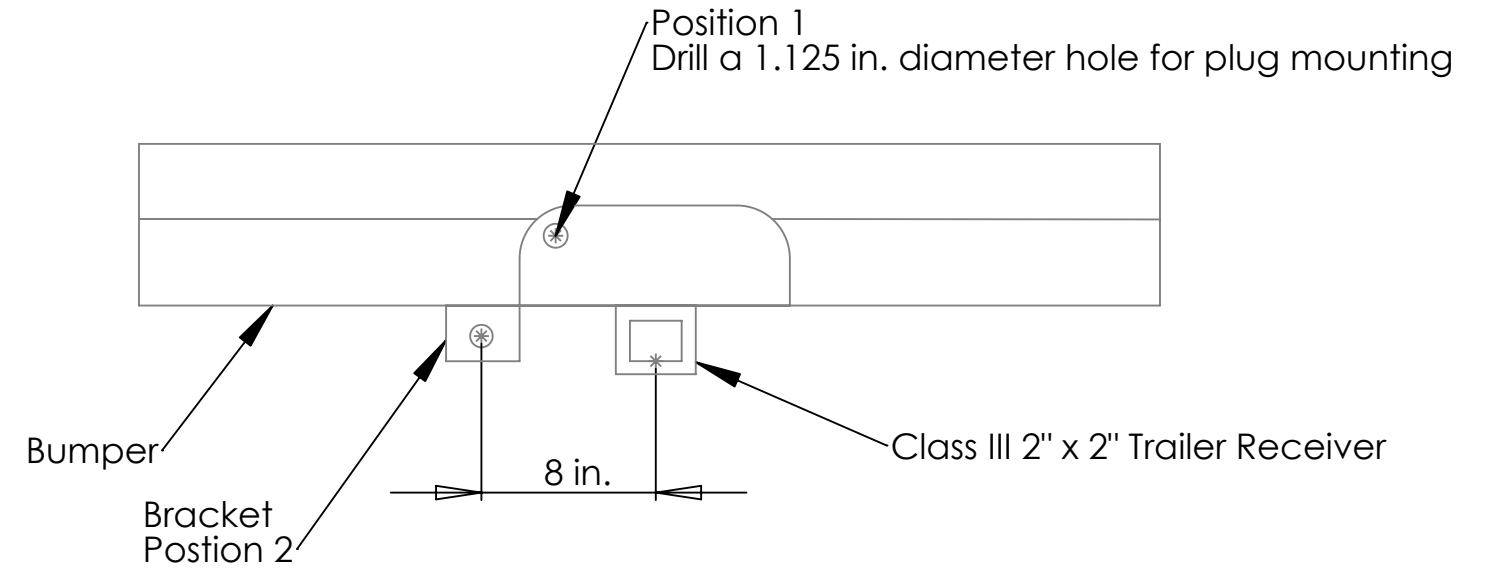
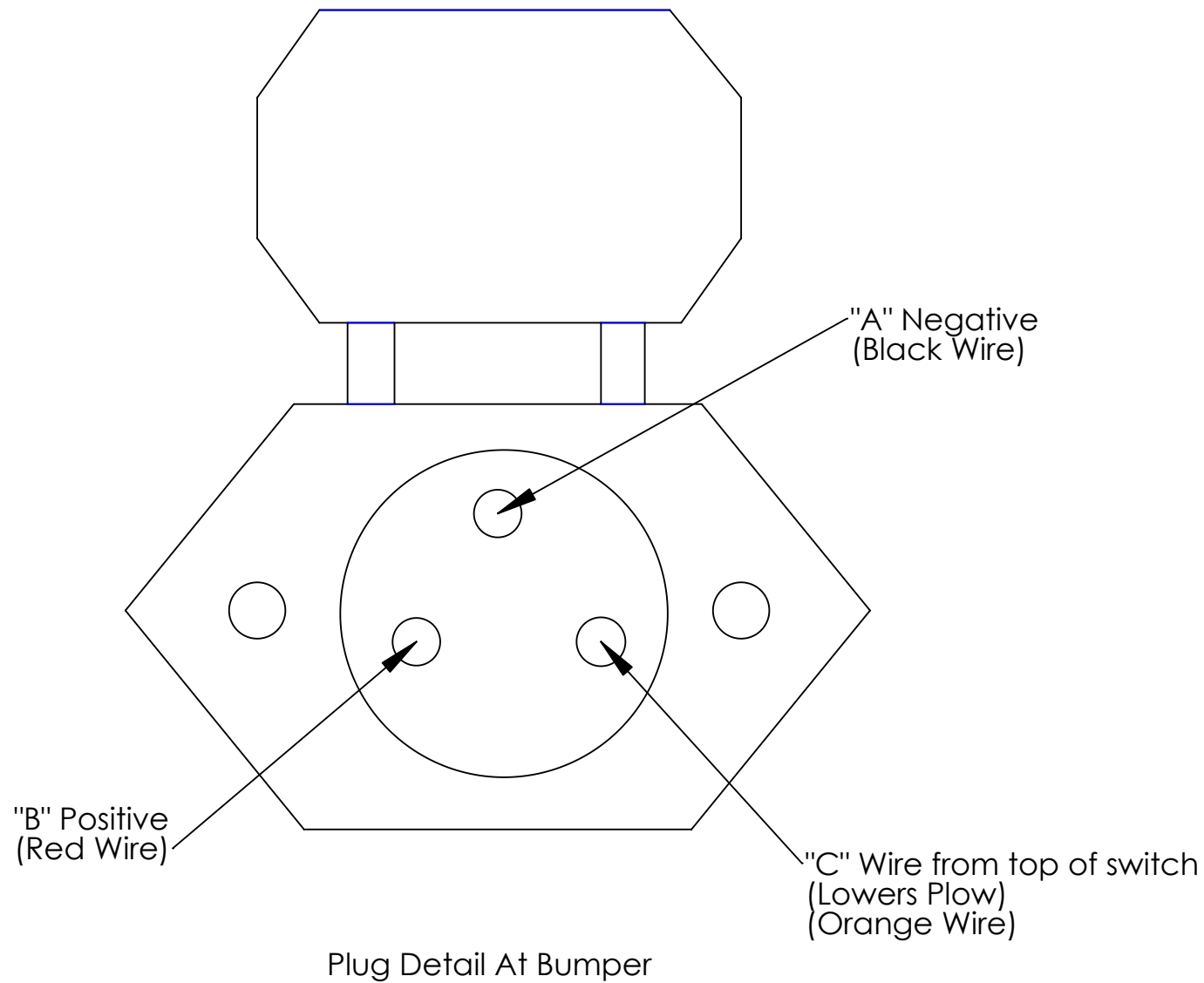
Notes:

1. Need Vehicle Hardware Kit (KT-001) for installation parts.
2. Install all wiring and terminals away from moving parts and heat producing items
3. White wire from Raise/Lower Switch to small terminal on Motor Solenoid.
4. Raise/Lower Switch mounts inside vehicle in position that is easily accessible while driving. Position the toggle switch so the locked position points toward vehicle floor. Toggle and Switch covers are provided in the kit.
5. Red Wire to Fuse Box (located under hood or under dash). Attach to fuse where power is only present when key is in the on position.
6. Mount Motor Solenoid to metal frame of vehicle. Ground wire is required if not mounted to metal.
7. Install Plug to rear bumper. Orient so plug flap swings upward. See sheet 2 for connector details.



TITLE:		
Wiring Instructions		
SIZE	DWG. NO.	REV
<b>B</b>	<b>DC-004</b>	<b>A</b>
SCALE: 1:1	WEIGHT:	SHEET 1 OF 3

**PROPRIETARY AND CONFIDENTIAL**  
 THE INFORMATION CONTAINED IN THIS DRAWING IS THE SOLE PROPERTY OF SUPERPLOW. ANY REPRODUCTION IN PART OR AS A WHOLE WITHOUT THE WRITTEN PERMISSION OF SUPERPLOW IS PROHIBITED.



\* = Recommended Plug locations.  
 Plug may be located in or under bumper near hitch as shown above.  
 Position 1 - Drill 1.125 in. diameter hole to mount on bumper  
 Position 2 - Utilize bracket supplied in kit (KT-001) to mount under bumper.

### Bumper Detail

#### Electrical Test

- 1) Using a test light and with the key in the on position, hold the switch up. You should have power across "A" & "B" terminals.
- 2) Release the switch and there should be no power across "A" & "B" terminals.
- 3) Using a test light and with the key in the on position, hold the switch down. You should have power across "A" & "C" terminals.
- 4) Return switch to neutral position and there should be no power across "A" & "C" terminals.



**CAUTION: BEFORE MOUNTING PLOW, PERFORM THE ELECTRICAL TEST ON SHEET 2. A FAULTY SOLENOID MAY CAUSE WIRES TO OVERHEAT AND DAMAGE ELECTRICAL CONNECTIONS. IF YOU ARE UNSURE PLEASE CONTACT A LICENSED PROFESSIONAL FOR INSTALLATION.**



TITLE:  
**Wiring Instructions**

PROPRIETARY AND CONFIDENTIAL  
 THE INFORMATION CONTAINED IN THIS DRAWING IS THE SOLE PROPERTY OF SUPERPLOW. ANY REPRODUCTION IN PART OR AS A WHOLE WITHOUT THE WRITTEN PERMISSION OF SUPERPLOW IS PROHIBITED.

SIZE <b>B</b>	DWG. NO. <b>DC-004</b>	REV <b>A</b>
SCALE: 1:1	WEIGHT:	SHEET 2 OF 3

