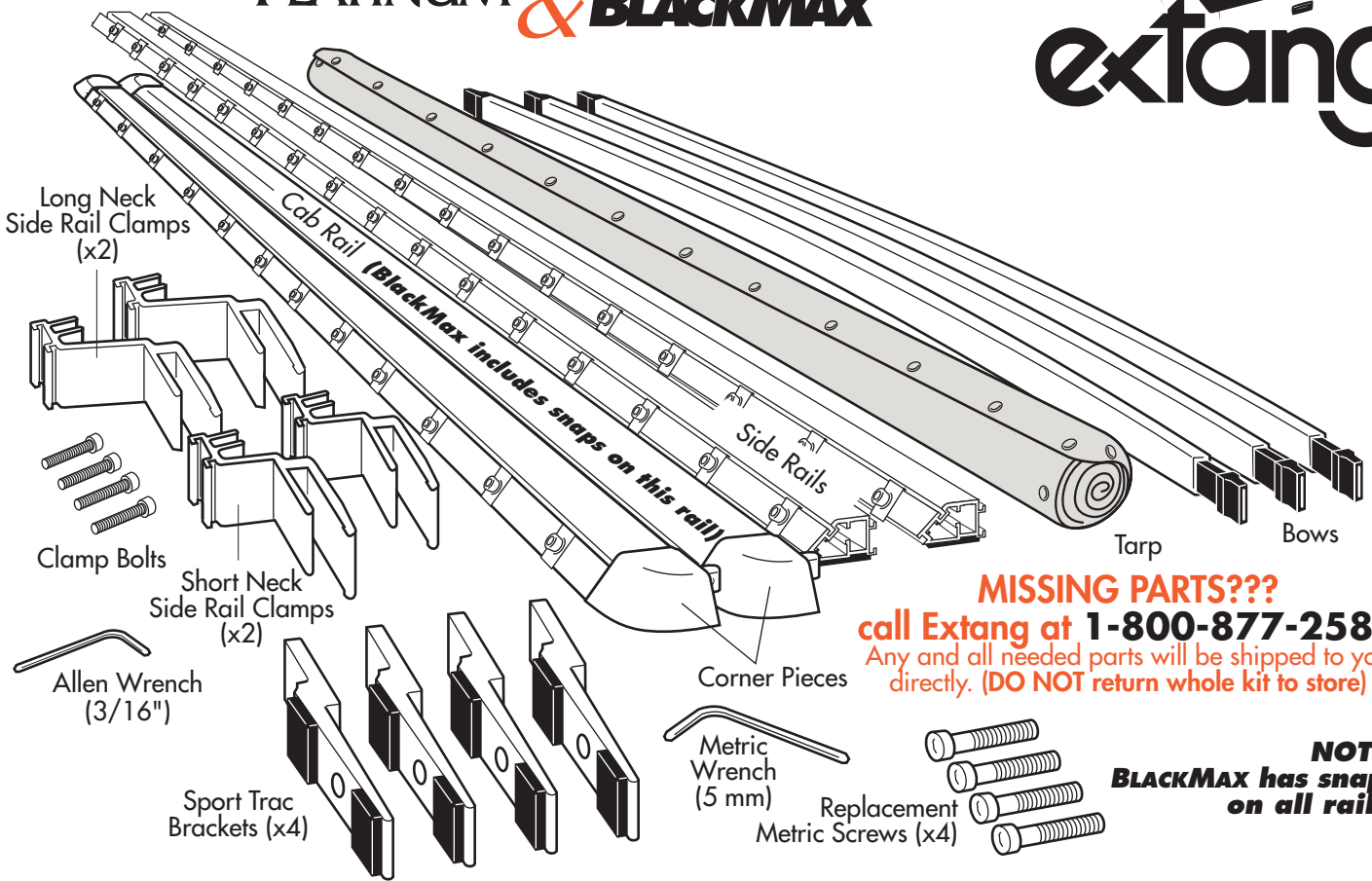


INSTALLATION SHEET - Explorer Sport Trac



extang

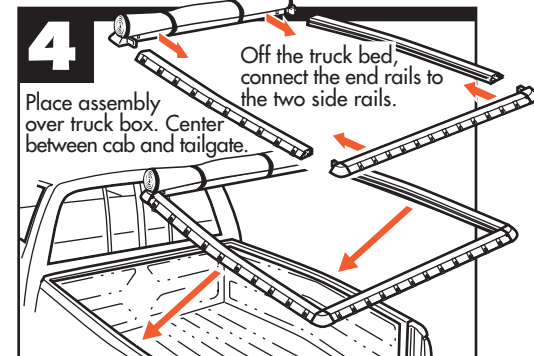
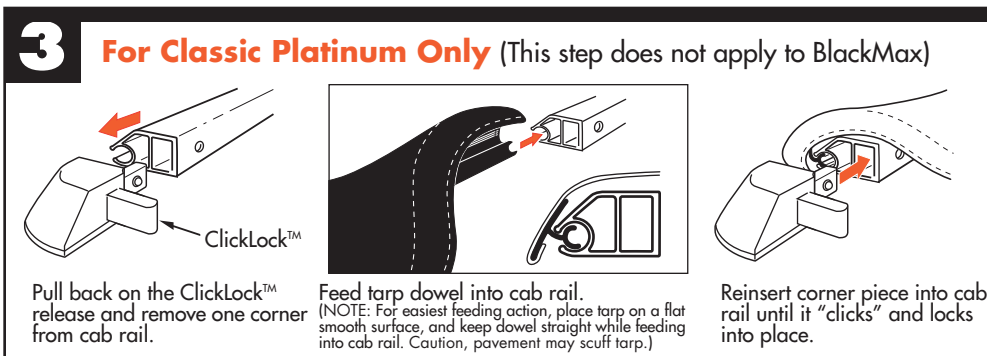
CLASSIC
PLATINUM & BLACKMAX™



MISSING PARTS???
call Extang at **1-800-877-2588**
Any and all needed parts will be shipped to you directly. (DO NOT return whole kit to store)

NOTE:
BLACKMAX has snaps on all rails.

PARTS INCLUDED IN YOUR KIT. You may want to lay them out in this manner for accessibility.



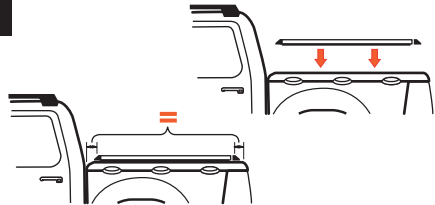
extang
Stands for Quality

Extang Corporation
1901 E. Ellsworth Rd.
Ann Arbor, MI 48108
734 677-0444, Fax: 734 677-8409

Visit us at:
www.extang.com

Item No. 0025-0102RH Printed in U.S.A.

5

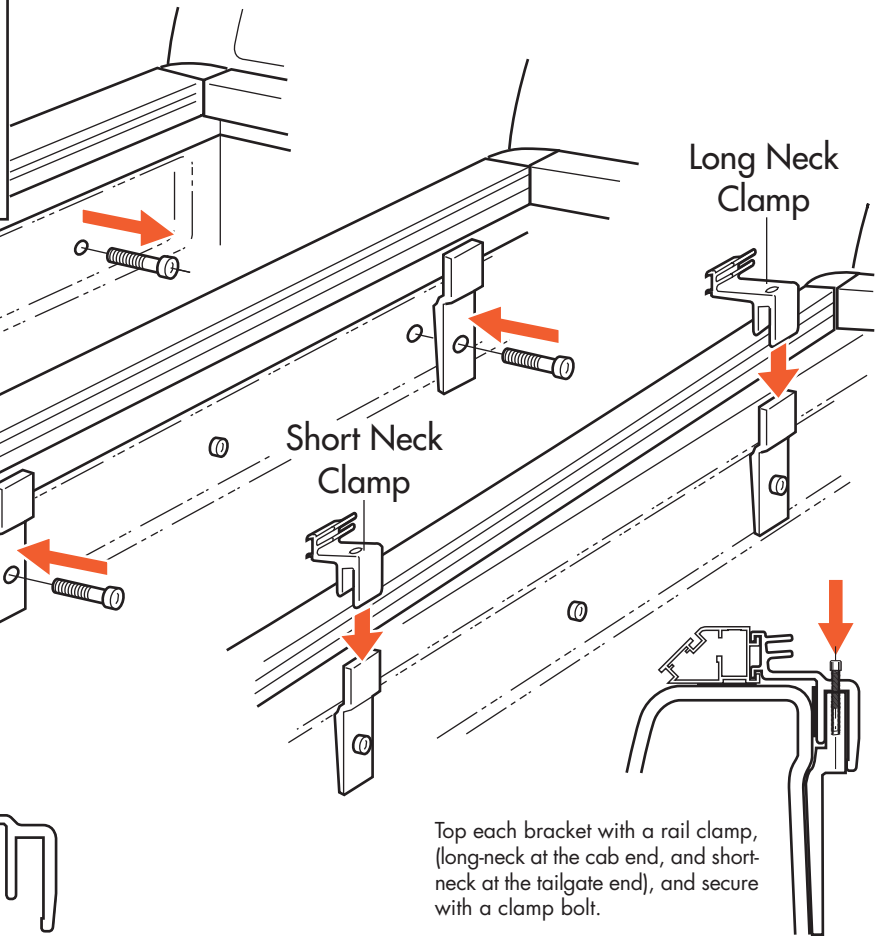


Place the rail assembly over the side of the truck box. Center rails evenly between cab and tailgate.

6

Side Rail Clamping (Same for each side)

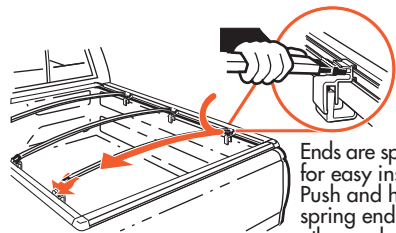
Remove two hex socket screws from the inside of the Sport Trac payload bed. Place Sport Trac Bracket over screw hole and replace with provided metric screws and secure firmly into bed wall with metric wrench.



Top each bracket with a rail clamp, (long-neck at the cab end, and short-neck at the tailgate end), and secure with a clamp bolt.

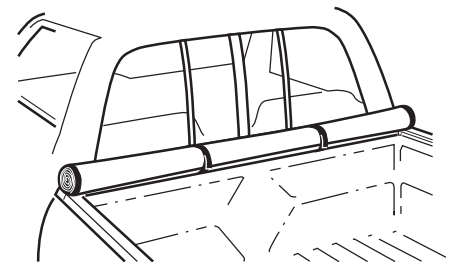
7

Insert bow onto top or bottom peg. (Top peg for performance, Bottom for good looks.)



SPECIAL FEATURE: Two pegs offer two height adjustments.

Note: Bow End does not fit between pegs.



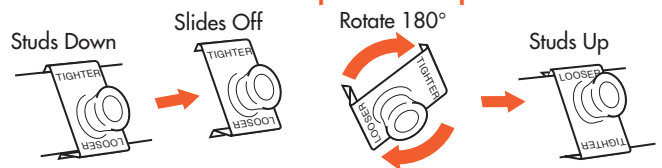
EASY USE OF TRUCK BED
Tarp may be rolled up and secured with Velcro® for bulk hauling

8

Start at Corners

Attach tarp by starting at the corners, and snap in place.

SPECIAL FEATURE
Weather-adjustable Snaps



SUMMER SETTING
Takes up slack in tarp caused by warm weather.

WINTER SETTING
Allows more slack in tarp for cold temperatures.