

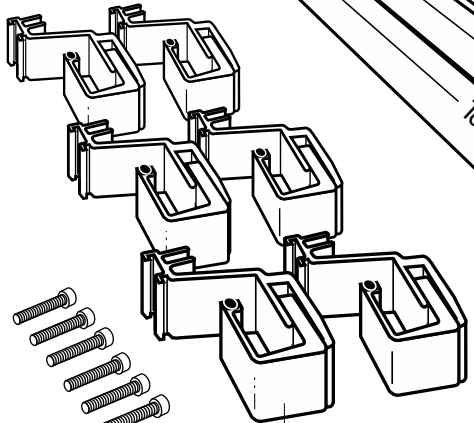
INSTALLATION SHEET-Ford Flareside '97-

Part Nos. 7615, 2615

TUFF TONNO III™ & **Saber TONNO**



"DOUBLE HOOK"
Side Rail Clamps

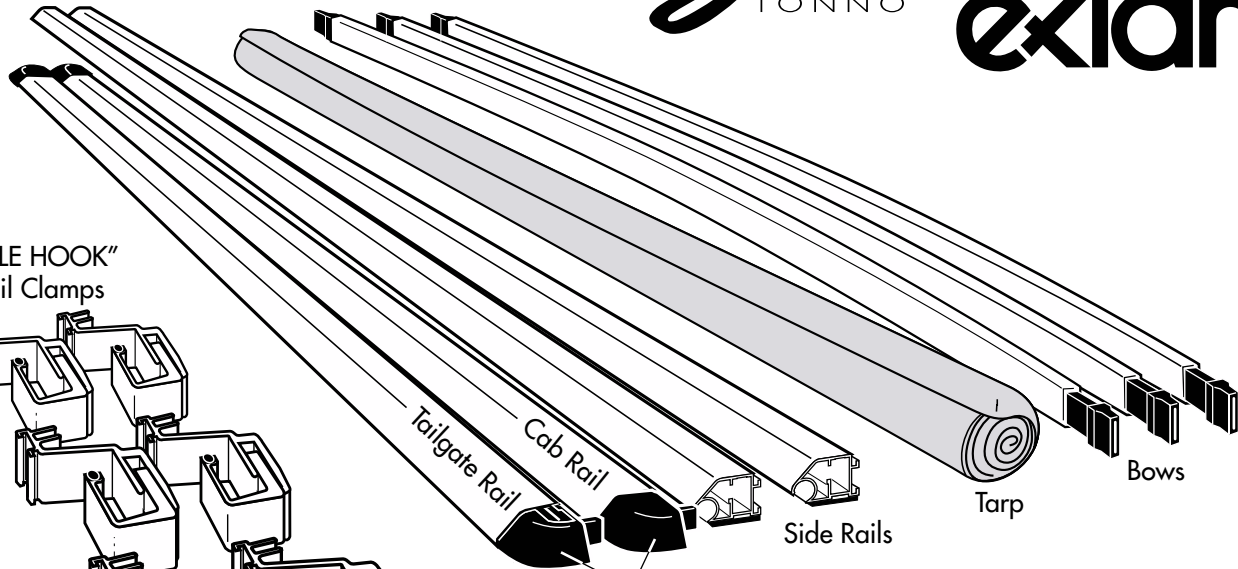


Clamp Bolts

"U" Shaped Clamps



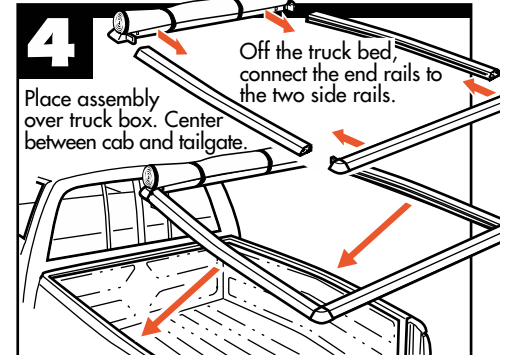
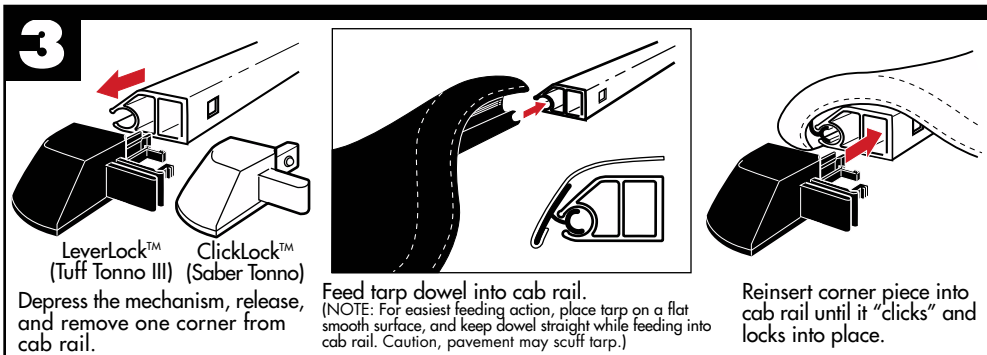
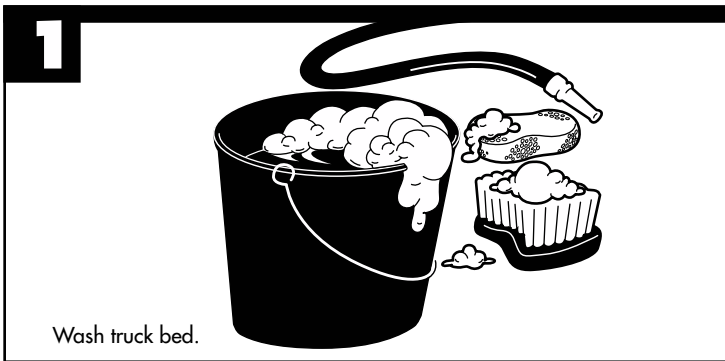
Allen Wrench



Corner Pieces
(Saber Tonno corners are brushed aluminum)

MISSING PARTS???
call Extang at **1-800-877-2588**
Any and all needed parts will be shipped to you directly. (DO NOT return whole kit to store)

PARTS INCLUDED IN YOUR KIT. You may want to lay them out in this manner for accessibility.



extang
Stands for Quality

Extang Corporation
1901 E. Ellsworth Rd.
Ann Arbor, MI 48108
734 677-0444, Fax: 734 677-8409

Visit us at:
www.extang.com

Item No. 0008-0102RH Printed in U.S.A.

5

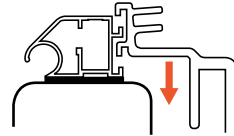
Side Rail Clamp Spacing (Same for each side)

See the stickers located on each side rail for clamp position, or refer to the dimensions given below.

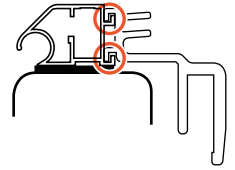
Note: Remove stickers after installation.

Install one middle clamp first and then install the opposite middle clamp next. Note: You will need to push the frame assembly in slightly to install the second middle clamp.

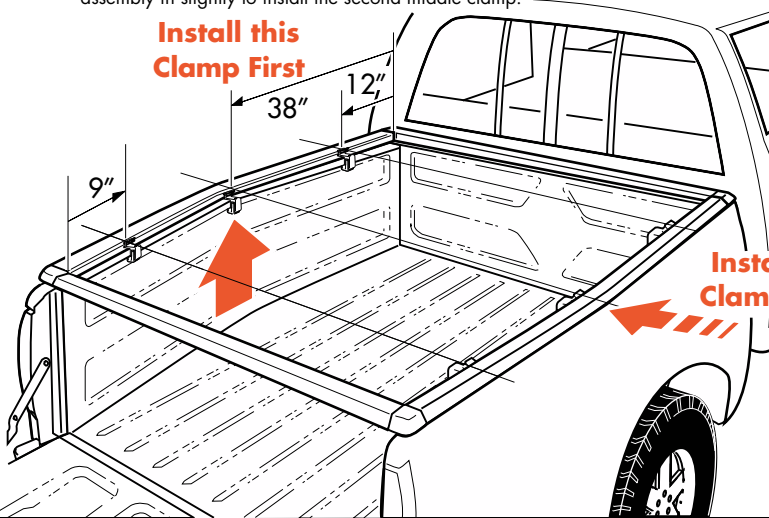
Place Clamp Here
STICKER



Insert side rail clamp all the way into rail.

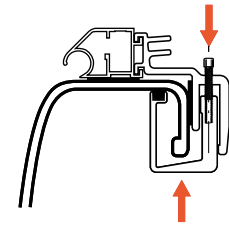


Install this Clamp First



Install this Clamp Next

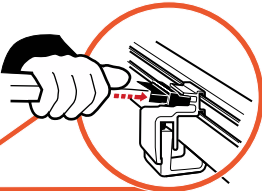
6



Attach "U" clamp to side rail clamp with allen bolt. Insert side rail clamp all the way into rail.

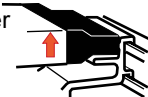
7

Ends are spring loaded for easy installation. Push and hold on spring end and let the other end slide on with the spring action.

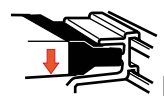


Insert bow onto top or bottom peg. (Top peg for performance, Bottom for good looks.)

Upper Peg



or



Lower Peg

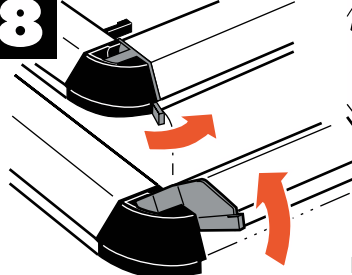
SPECIAL FEATURE: Two pegs offer two height adjustments.

Note: Bow End does not fit between pegs.

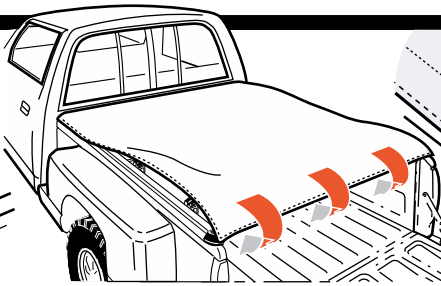


Not
Do Not Place Between the Pegs

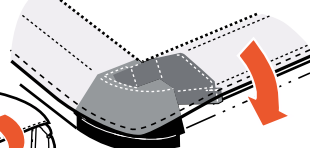
8



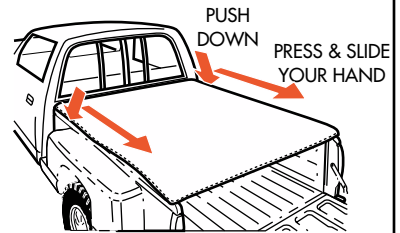
A. Release lever on both corners of tailgate rail and tilt up rail.



B. Attach tarp at front by pressing down on edge of tarp with the palms of your hands (about only 12 inches on each side). Then hook tarp to the tailgate rail's groove and click down to tighten tarp. See close-up.



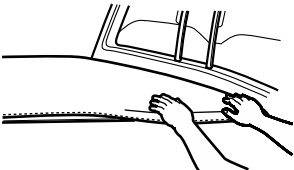
Close-up of downward rotation of rear rail. You will feel the "snap" effect and see it tighten snugly.



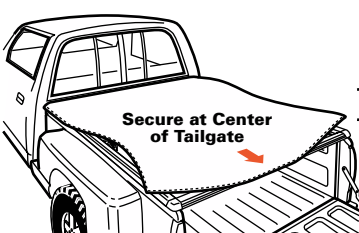
C. Finish attaching tarp along each side by pushing down and sliding your hand towards each corner. You can feel the "grip" action.

For Tuff Tonno III:

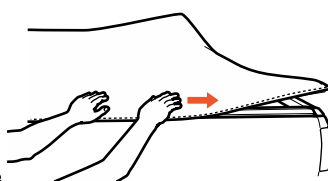
For Saber Tonno:



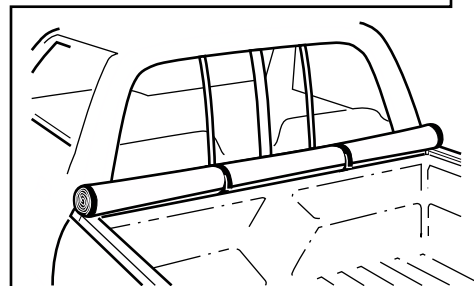
A. Attach tarp from front corner (12 inches). Repeat for each side. **Note: Pull tarp out while pressing down in center of the side strip to flex hook open for easy attachment.**



B. Secure tarp at the middle of tailgate rail.



C. Finish attaching tarp along each side by pushing down and sliding your hand front to rear, and on tailgate rail, by pressing out from the center.



EASY USE OF TRUCK BED

Tarp may be rolled up and secured with Velcro® for bulk hauling